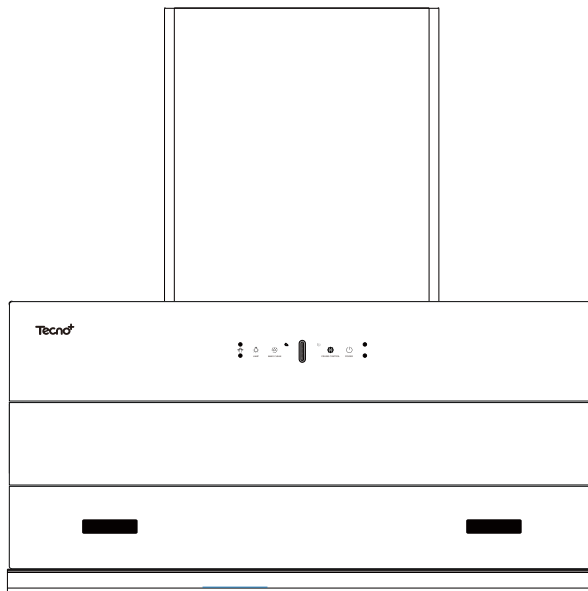


USER MANUAL



RANGE HOOD

Please read the instruction manual carefully before use and keep it safe

01 Safety Precautions.

In order to avoid harm and property damage to users and other personnel, please carefully read the following important safety matters, please strictly abide by, and on the basis of full understanding of the content of the correct use.

Interpretation of signs



Forbidden Sign

Non-professional installation of this product is prone to potential risks, endangering the safety of life and property.



Warning Sign

Use this product in a standard manner to prevent injury or property damage caused by incorrect operation.



Attention Sign

Illegal operations will affect the normal operation of the product and lead to uncontrollable losses.

- Please read this instruction manual carefully before use, and keep it properly for reference.
- Any failure and loss caused by non-compliance with the precautions specified in the instruction manual are not within the scope of the manufacturer's free warranty, and the manufacturer does not assume any relevant responsibility.
- If there is any conflict between the provisions of this manual and the mandatory provisions of national laws, the legal provisions shall prevail.



Forbidden

1. Do not disassemble, install, or maintain the range hood for non-professional personnel.
2. Non-professional maintenance personnel are absolutely prohibited to change the internal wiring of range hood without permission.
3. Do not touch the power plug, electrical parts and power switch with wet hands. Otherwise, electric shock may occur.
4. The fire should be put out in time when not in use. It is forbidden to bake the range hood directly by the fire, and make it hot and dangerous.
5. Do not allow unsupervised children and the weak to use the range hood alone, otherwise it may lead to electric shock or other accidental injury.
6. Do not modify, stretch, tie, or press the power cable. Otherwise, the power cable may be damaged and electric shock or fire may occur.
7. Do not allow electrical parts such as motors, switches and connectors to get wet with water. Do not flush the range hood with water. Do not use the range hood when it is wet with water. If used, it will lead to electric leakage, electric shock and other accidents.

Warning

1. Before cleaning range hoods and providing installation or maintenance services, disconnect the power supply to avoid electric shock.
2. The exhaust gas from the range hood should not be discharged into the hot pipe used to discharge the smoke from burning gas or other fuels.
3. When a range hood is used in conjunction with an appliance that burns gas or other fuel, the room must be well ventilated.
4. If not cleaned according to the instruction manual, the range hood has the risk of fire.
5. To avoid injury, do not put your fingers or other objects into the moving parts of the range hood.
6. When the oil pan is on fire, please turn off the range hood immediately and use effective extinguishing methods to extinguish the fire, such as covering the open flame with a metal lid, closing the main gas valve immediately, and keeping combustible materials away from the open flame.

Attention

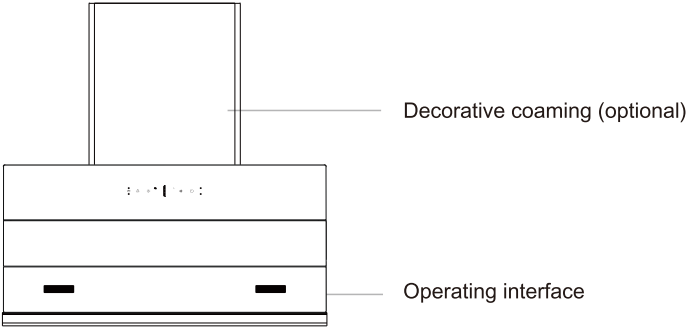
1. The range hood should use a special power socket, and the special power socket should be reliably grounded.
2. The ambient temperature of the range hood cannot exceed 40°C.
3. If the power cable is damaged, it must be replaced by professionals from the manufacturer, maintenance department or similar departments to avoid danger.
4. This appliance is an outdoor discharge range hood, and the lampblack is discharged to the outside through the smoke pipe. Please ensure that the exhaust pipe is smooth, so as not to affect the smoke exhaust effect.
5. The installation shall be carried out by professional personnel. After the installation and test run, the after-sales service personnel shall explain the use method to the user while there is no abnormal phenomenon.
6. If you need to clean the inside of the range hood, please contact Macro after-sales personnel for professional cleaning.
7. If need to use the AC power of more than 220V, please confirm with supplier for safety issue.

Reminder

1. If the range hood is not used for a long time, remove the power plug from the socket.
2. the installation of the new range hood, if you find that the accessories do not conform to the instructions, please contact the local dealer or service center immediately.
3. Please properly dispose of recyclable packaging materials to maintain a good environment.
4. Do not let children play with plastic films and packaging boxes, which may cause choking accidents, please keep packaging materials away from children, packaging materials are not toys.
5. If the old range hood cannot be used, it is recommended that you dispose it into the unusable state and discard it. Old range hoods contain reusable materials, please assist with disposal or recycling, thereby contributing to environmental protection.
6. If the range hood is found to be obviously damaged, do not install or use it. Please contact your local dealer or service center immediately.
7. In order to ensure that you can use this range hood correctly and safely, please carefully read the operating instructions of the range hood you purchased before using it, and strictly follow the precautions in the operating instructions.

02 Product & specifications

1 Product appearance drawing



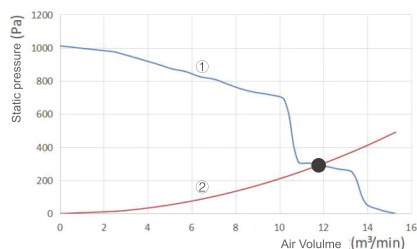
2 Specifications

Model	TNP HD SLOPE 3
Rated voltage	220V~50Hz
Rated motor input power	320W
Maximum light power	2W×2
Rated total input power	324W
Standby power	2W
Shutdown power	1W
Oil separation(%)	90%
High speed air volume	1200m³/h
Net weight	23kg
Product package size	1000 x 520 x 495mm
Working air volume	720m³/h
Noise level at low speed	42dB(A)
Noise level at high speed	67dB(A)
Energy efficiency class	First Class
Normal odor reduction	95%
Instantaneous odor reduction	60%
Maximum static pressure /Pa	1000Pa
7m³/min full pressure efficiency	30%
Maximum pressure efficiency	42%
Gross weight	26.5kg
Product dimensions	900 x 410 x 545mm

Notice

1. The allowable difference between the actual measured values of air volume, wind pressure and maximum static pressure and the stated values shall not exceed -10% of the stated values;
2. The noise in the semi-anechoic chamber shown is the A-weighted sound power level;
3. The above data are measured according to standard test methods under the environmental conditions specified by national standards;
4. The sound pressure level noise of the semi-anechoic chamber is the A-weighted sound power level noise minus 12dB;
5. The noise in the semi-anechoic chamber at low speed gear is 60dB(A).

03 Troubleshooting



Index number description:

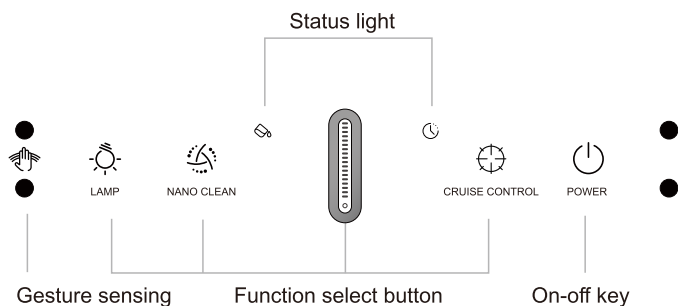
- ①: air performance
- ②: exhaust resistance
- : Work point

Note: The air volume corresponding to the intersection of the air performance line and the exhaust resistance line is the working air volume

Troubleshooting


Troubleshooting	Cause of failure	Treatment Method
The motor does not run when the light is off	No power supply at home ; Poor contact between plug and socket	Wait for the power supply to work in your home and try again, Have it checked by a professional
	Power cable break ; The fuse is blown out	Call supplier for more information
The light is out ; Motor rotation normal	The LED cold light is broken ; The power module or control panel is faulty	Call supplier for more information
The light is on; Motor does not rotate	Motor ove-temperature protection action ; Burnt out capacitor ; Motor burn out ; The power module or control panel is faulty	Call supplier for more information
Violent body vibration; Increase in noise	Check whether the range hood is firmly suspended; There is too much oil on the impeller; Check whether external screws are loose	Hang the range hood securely; Please have it professionally cleaned;
	Check whether the internal screws are loose; Whether the impeller is installed properly; Impeller damaged or missing balance block	Call supplier for more information
The suction is not strong	Too much air convection or ventilation not good in the kitchen; Smoke pipe is too long, too many turns	•Reduce air convection or moderate door opening, window •Non-technical failure
	It's too windy outside; Installation height is too high	Call supplier for more information

TNP HD SLOPE 3 Main screen



Switch button

Delayed shutdown:

When unit is running , press the [] key to enter the delayed shutdown, then it will be running at low speed for 90s, then shutdown.

Cruise Control function

Cruise function open/close button;

Open the cruise function, the system detects the pressure of the public flue pipe in real time, and controls the fan speed according to the corresponding speed.



[LAMP] button

Tap the "Light" button to turn on/off the light.



Gesture control

Wave hand from left to right, go to low speed, second speed and high speed, and rotate.

Wave from right to left, enter the delay, wave again, turn off the unit.

Note: In the off status, long press the button (☼ + ⏻) can turn on/off the gesture control function.



Standby State

In the standby state:

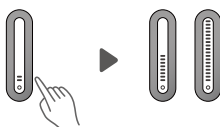
only [⏻] button lights is on, unit motor, lighting is off

Off state:

Press the [☼] button to start, then press it again, then you can enter the standby state.

Wind speed control

The display is a touchable button for speed control. It can switch for Low /middle/ high speed. Long press this wind speed button for 2 second in working status can turn off the motor.



[NANO CLEAN] Button

Tap the "Clean" button to turn on/off the cleaning function; After unit has been working for a period of time, the unit will automatically run the cleaning function, it's triggered after pressing the "Power" button and turn off the unit. Cleaning automatically shut down after 3 minutes. When the "Clean" function is running, the "Wind speed" key and gestures cannot be operated.



Pour oil reminder

Oil pour reminder indicator (every 60 hours, indicator lights, prompt oil pour).

Long press the [Clean] button for 3s to cancel this reminder.



Thank you for using our products. We will provide you with the following services by warranty card and valid invoice.

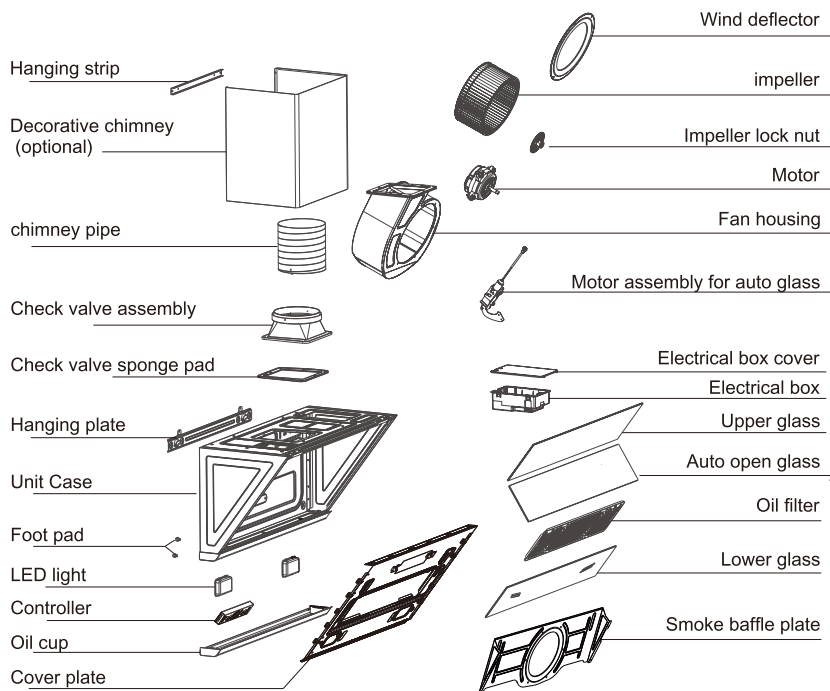
Free repair note: According to the national three guarantees, the product repair period is three years (counting from the date of issuance of the purchase certificate, special circumstances according to our after-sales service policy and sales policy implementation).

The following situations do not belong to the scope of free repair, but we still provide you with paid services:

1. Three packages have expired.
2. Products damaged by improper use or improper storage by the user.
3. The purchase certificate is missing.
4. Machine damage, misuse, collision, negligence, abuse, fluid intake, accident, alteration, disassembly and incorrect use of non-machine parts caused by installation or maintenance by service personnel not authorized by our company; Or tear, alter the label, fuselage serial number, anti-counterfeiting marks and other behaviors.
5. Products lost due to force majeure. The use of the environment, such as voltage, humidity, temperature, ventilation conditions and other factors caused by the company's control of all damage and loss, are not within the scope of free repair, the company does not assume any responsibility.
6. Products that are not suitable for use and are damaged due to improper use of the instructions.

06 Structure Drawing

The picture is for reference only. The product picture is subject to the actual product.



① Installation precautions

★ Special note: The company products must be installed and maintained by our authorized installation and maintenance service providers, otherwise we will not be responsible for the accidents caused by installation and maintenance.

1. If your kitchen is under renovation, do not expose the range hood, because construction materials, dust, paint, coatings and the gas they volatilize will corrode the surface of the range hood, and thus make the surface tarnish. Therefore, it is recommended that you install the range hood after the decoration is completed.
2. Install the range hood on a non-flammable wall with sufficient supporting strength that can bear more than three times the weight of the range hood.
3. To ensure the safety and smooth installation, please use the accessories delivered with the installation (especially plastic expansion tube and wood screw); When installing an expansion tube, ensure that the expansion tube is closely matched with the wall holes. Do not drill too large holes to prevent the expansion tube from loosening and causing accidental fall.
4. Do not install the range hood in the bathroom or a place with high humidity. It may cause electric shock.
5. When installing the lampblack machine, do not contact the steel bars in the building with wood screws.
6. If the range hood is installed above the gas range, the distance must be at least 650mm. For details, see the procedure for installing a range hood.
7. The width of the stove should not be larger than that of the range hood.
8. The range hood is a household appliance, not suitable for industrial and commercial use, avoid use in special environment.
9. In case of gas leakage, do not use the range hood; otherwise, there is a risk of fire.
10. If you do not use the lampblack machine for a long time, unplug the power or turn off the switch on the socket.
11. If you need to connect the smoke pipe directly to the public flue, do not insert the smoke pipe too deep into the public flue to avoid affecting the smoke exhaust effect.
12. If you connect the pipe directly to the outside, extend the pipe at least 30mm out of the wall, and the outlet should be slightly downward to avoid rainwater backpouring.
13. The relevant laws on emissions must be observed

② Installation Environment

This range hood can only be installed in the home kitchen. And avoid installation in too many doors and Windows, the formation of too strong air convection, thus affecting its smoke effect. The ambient temperature of the range hood should not exceed 40°C. The wall should be non-combustible. Do not install the hood on a flammable wall such as wood.

07 Installation

3 Installation precautions

The following tools are required to install the hood



Electric
impact drill



Phillips
screwdriver



Needle
nose pliers



hammer



Tape
measure



Spirit
level

General purpose accessories



User Manual*1



Cigarette pipe *1
 $\Phi 180 \times 1800$



Self-tightening
screw A *2
M4 \times 12



Plastic expansion
tubes *4
 $\Phi 10 \times 60$



Wood
screws *4
 $\Phi 5 \times 60$



Self-tapping
screws *2
ST3.5 \times 9.5



Self-tightening
screw B *4
M4 \times 20



Check valve
assembly *1



Mounting plate *1

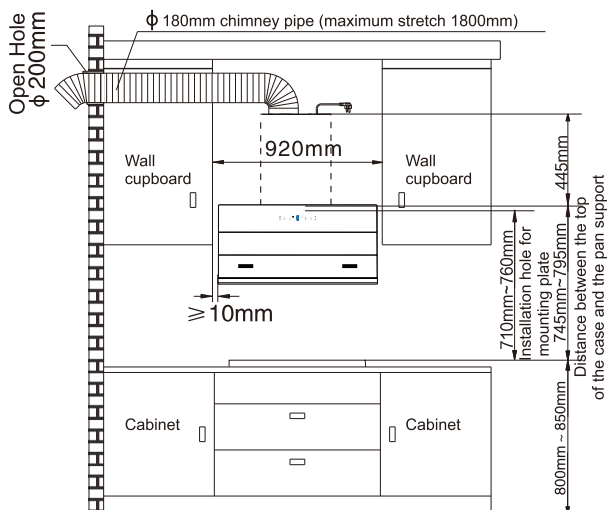


Oil cup *1

Note: Decorative chimney components are optional and need to be purchased from local dealers.

07 Installation

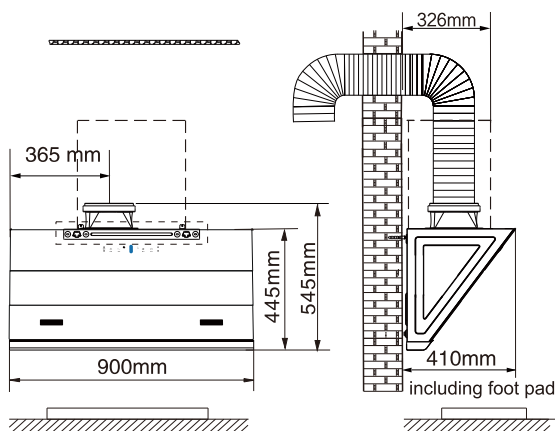
4 Installation Diagram



The distance between the exhaust air outlet and the exhaust hole of the range hood should not be too long, and the number of turns should not be more than 2. If fitted with cabinets, the recommended vertical distance between the top of the case and the top of the pan support is 795mm. The vertical distance between the top of the pot support and the table is 20-30mm. The installation height can be adjusted according to the user height and requirements, but it is not recommended to exceed the recommended height range.

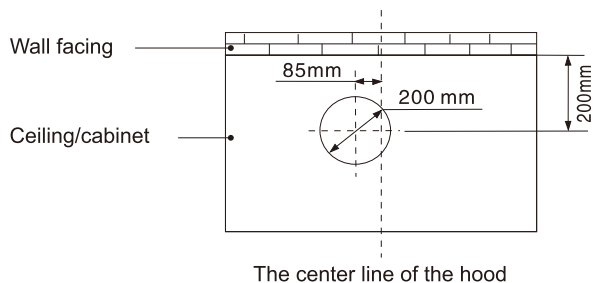
Note: This installation height is only applicable to the electric hob. If it is installed above the gas stove, it must be installed according to the height requirements of the gas stove.

5 Installation Dimension



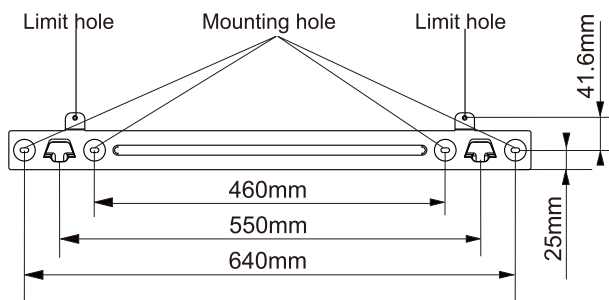
07 Installation

⑥ Cabinet or ceiling opening dimensions



⑦ Mounting plate installation

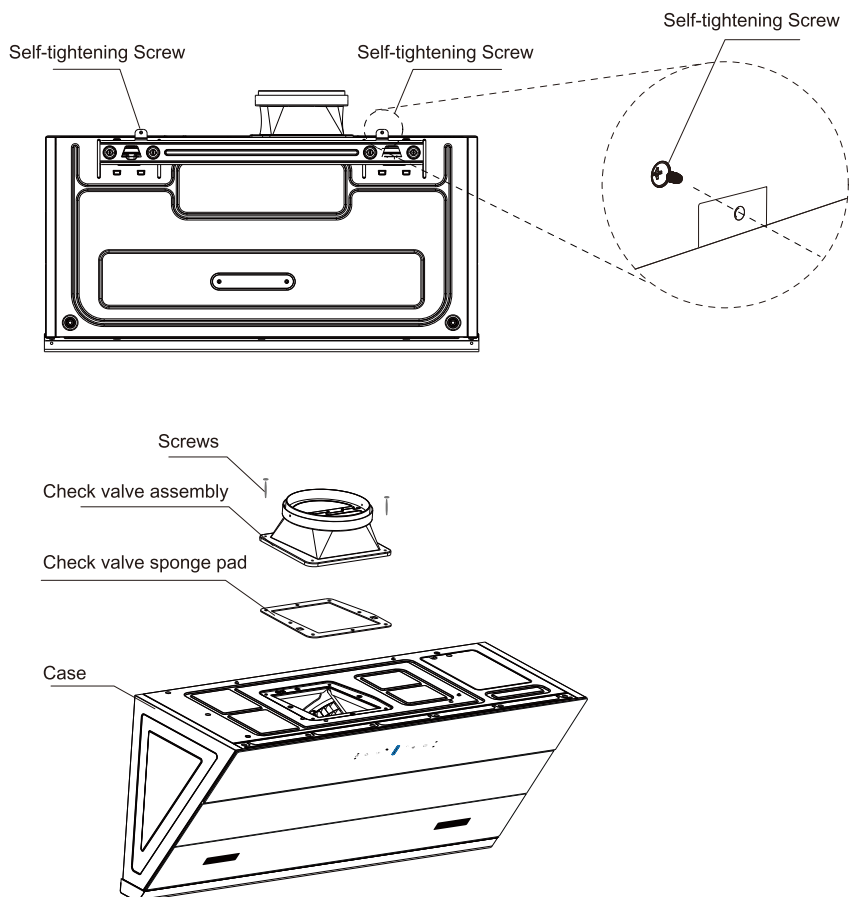
Accurately determine the position of the mounting hole of the plate at the corresponding position of the wall, and drill out the installation in the hole position with the drill bit



07 Installation

⑧ Install the Unit Body

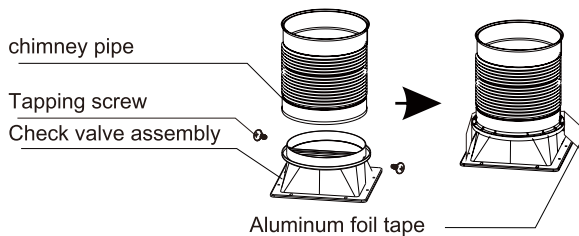
Hold the cabinet up, align the mounting holes at the back of the box with the hooks on the mounting plate, drill installation holes in the holes using a drill bit, firmly insert a plastic expansion pipe, take out the anti-trip plate in the fitting bag, align the anti-trip plate with the holes, and tighten the anti-trip plate using the equipped wood screws to prevent the range hood from falling unexpectedly.



07 Installation

9 Chimney Pipe Installation

Check whether the blade of the check valve can be opened, and then put the matching smoke pipe into the check valve, and rotate the smoke pipe connection ring to lock it.



10 Mounting oil cup

Push the oil cup in along the oil cup hanging ear.



11 Mounting oil cup

After the installation is complete, check whether the range hood is secure, switch on the power supply, and test run the range hood. Check whether the functions of the range hood are normal and whether the body has abnormal vibration.

The range hood should be regularly maintained according to environmental conditions to keep the range hood clean and effective, and extend its service life.

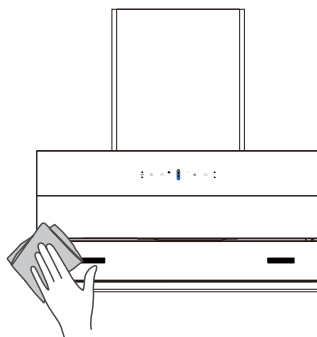
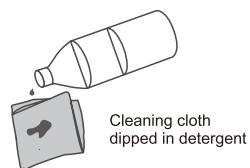
① Maintenance

- Be sure to cut off the power supply to avoid electric shock.
- Please wear protective gloves to avoid cutting your fingers when cleaning.
- Please clean the utensils on the stove.

① Smoker surface

It is recommended to clean the surface of the range hood immediately after each use. Wipe the outer surface of the hood with a soft damp towel or a towel with neutral detergent, and then wipe the hood dry with a soft dry towel.

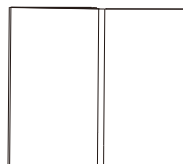
Do not use corrosive chemicals such as gasoline and alcohol, or abrasive cleaning agents such as toothpaste, detergent, and laundry detergent to scrub surfaces.



② Oil cup

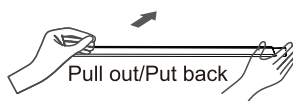
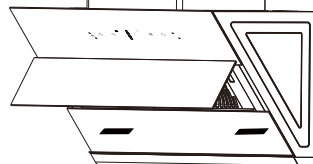
Check and clean the oil cup regularly. When the oil stored in the oil cup reaches the oil cup limit, please clean it in time to prevent overflow.

Hold both ends of the oil cup with both hands, pull forward horizontally, remove the oil cup, and pour out the waste oil.



③ Complete machine

In order to maintain good smoking effect and long service life, the internal cleaning of the whole machine should be carried out by professionals, and it is recommended to clean once a year.



2 Circuit diagram

